

USF Maps App

<https://maps.usf.edu/>

5/13/2013-6/30/2017

Project Description

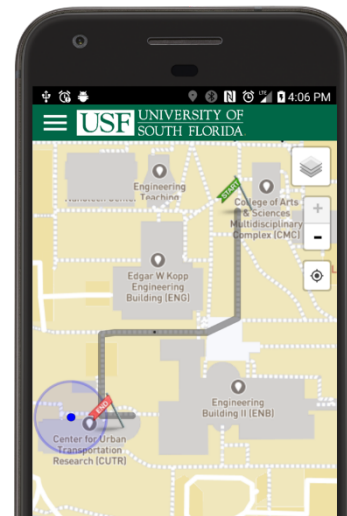
Describe project in a few sentences including installed infrastructure size or number of units, involved activities and student engagements and whether the project is a follow up to another project. Also include budget information and potential annual energy savings or green house gas emission. Mention if there was a fund contribution from other sources.

Project goals

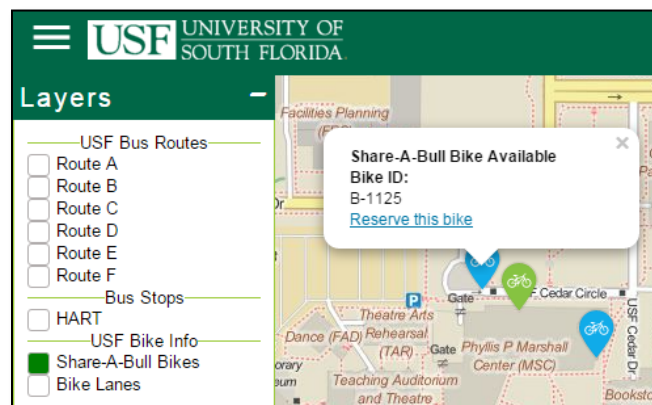
Provide easy access to multimodal traveler information to help students better navigate the USF Tampa campus.

Project results

The USF Maps App (<https://maps.usf.edu/>) was developed by USF Computer Science students, advised by Dr. Sean Barbeau from the Center for Urban Transportation Research at USF. Prior to the existence of the USF Maps App, students had to visit multiple websites and download various PDFs to see real-time USF Bull Runner information, HART bus stop locations, USF Share-A-Bull bike share information, building locations, parking lot information, USF Enterprise CarShare information, and more. Now, students can plan multimodal trips and view map layers from the USF Maps App, a single mobile web application that works across mobile phones, tablets, desktops, and laptops. The USF Maps App has also been integrated into the existing MyUSF Android and iOS apps via the “Campus Maps” icon, making it easy for students to discover the information. The USF Maps App launched on January 1, 2017, and in the first 11 months over 20,000 unique users have used the app, with over 150,000 planned trips. The app software has been open-sourced on Github



USF Maps App helps students find their way around campus with a multimodal trip planner



The Layers feature shows where students can find various buildings and services, including real-time bike share locations

(<https://github.com/CUTR-at-USF/usf-mobullity>), which will make it easy to expand the app and add new features (e.g., real-time smart parking information) and also makes it easy to deploy the app to other areas (e.g., other USF campuses, other universities).

Partners

Students from the Department of Computer Science & Engineering with Dr. Sean Barbeau from the USF Center for Urban Transportation Research were the core software development team. The core development team worked with the USF Share-A-Bull team to integrate bike share information, USF Parking & Transportation Services and USF Facilities Management to obtain data for the USF Bull Runner and other USF campus infrastructure, USF Student Affairs to ensure the app met the needs of students, USF Students with Disabilities Services to address needs for students with disabilities (in particular the “avoid stairs” trip planning option), USF Department of Psychology for early user interface testing, the USF Office of Sustainability in the Patel College of Global Sustainability for early project coordination, USF IT for server hosting and integration with the MyUSF app, and Hillsborough Area Regional Transit for Tampa bus system information.

More Information

Questions about the project should be directed to:

Sean J. Barbeau, Ph.D.

Principal Mobile Software Architect for R&D

Center for Urban Transportation Research

University of South Florida

4202 E. Fowler Avenue, CUT100 | Tampa, FL 33620-5375

813.974.7208 | [QR Code](#) | <http://www.locationaware.usf.edu/>

